

Geographic Information Systems (GIS) Services

"We Lay the Groundwork for Success"

OVERVIEW

Condor Earth Technologies, Inc. provides Spatial Information Services to various industries and government. We make maps, but more than that, we are using Geographic Information Systems (GIS) to meet the needs of our clients. By integrating GIS, Computer Aided Design (CAD) and global positioning systems (GPS) Condor is strategically employing GIS to fulfill the needs of our clients. Our services specialize in the visualization of geographic data, analysis of spatial relationships and efficient data management.

WHAT IS GIS?

A GIS is an organization of hardware, software, people, data and methods, which produces smart maps. Unlike a flat paper map, where "what you see is what you get", a GIS can have multiple layers of information available for interactive analysis. With a GIS, a few clicks on a computer could allow you to track current traffic patterns, predict growth in your local town or direct you to your favorite store.

GIS BENEFITS

Condor is using GIS to help people make better decisions in a host of industries including community development, mining, agriculture, petroleum pipelines, utilities and others. After a GIS is established, data are in one common format, allowing easier access and utilization. The result is better, well documented decisions which impact all phases of a project. Bottom line: Increased productivity and efficiency.

FIELD DATA COLLECTION

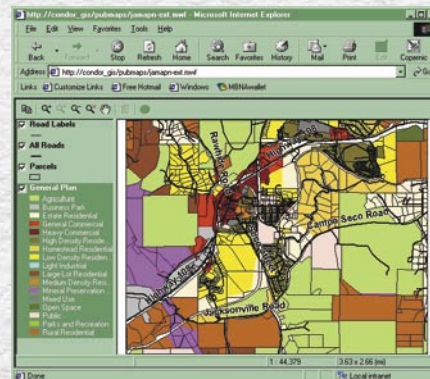
The key component and most expensive phase of implementing a GIS project is the creation and collection of data. Condor has developed our own line of earth technology products to increase the speed and



accuracy of data collection. Our PenMap field data collection software is the most advanced survey-mapping, GIS data-collection and navigation platform on the planet. For seamless GIS integration into ArcView, the PenMap-ArcView Survey Extension ports GIS data to and from PenMap with no external conversion or transformation. PenMap systems are used by the U.S. government and the largest engineering firms in the world to create real-time survey databases for mapping, sampling and GIS data creation. Condor is partnering with ESRI to provide Mobile Plus and is a system integrator for ArcPad, ESRI's palm-sized data collection product for simple GIS data collection.

INFORMATION MANAGEMENT

The implementation of a comprehensive GIS requires careful planning. Condor can assist you through this phase by evaluating your internal needs and developing strategies from data collection to final documentation. Condor's hands-on experience includes the development of a GIS for a new town site (est. pop 50,000) from the ground up, building and maintaining a GIS for multiple watersheds, and other analyses and applications. Our Internet Map Server has also allowed our clients secured website eliminating the need for purchasing new hardware, software and training personnel. If you can browse the Internet, you can use this GIS.



ANALYSIS

GIS can help answer questions such as: *Where is the best place to build my business? How much run-off will occur during a storm event? or What is the best 911 response route during different times of the day?*



CONDOR EARTH TECHNOLOGIES, INC.

An Employee Owned Company

Sonora • Stockton • Merced California 800.800.0490

website: www.condorearth.com

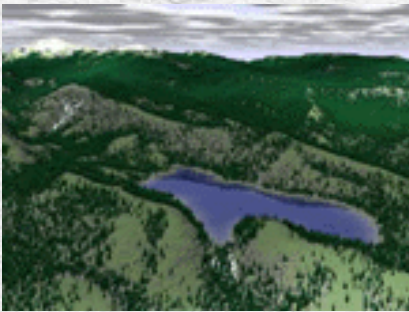
e-mail: sonora@condorearth.com

CONDOR GEOGRAPHIC INFORMATION SYSTEMS SERVICES

Condor specializes in data automation and custom programming to quickly and efficiently answer questions that relate to spatial information. Not only does GIS analyses help us understand spatial relationships, but it also saves a considerable amount of time by providing a management and information tool. GIS spatial analysis results help support and benefit engineers, planners, biologists, geologists, managers and many others.

VISUALIZATION

Condor is using the latest innovative technologies to display GIS data. In addition to the production of high quality maps, we produce 3D animations to give our clients a 'real world' perspective. This information is also made available over the internet providing easier access and faster results.



CONDOR TEAM

Condor maintains a continuing commitment to state-of-the-art technology, research and innovation, implemented by an experienced consulting staff. This commitment and our emphasis on practical client solutions has made Condor a leader in the GIS industry. For over 10 years, Condor's GIS staff has worked closely with engineers, scientists, planners and other professionals to develop GIS products and systems. Our personnel and products have been deployed worldwide for data collection and high precision monitoring. Integrated with GPS, GIS and CAD systems, Condor provides the most comprehensive solution for spatial data management of projects.

CAPABILITIES

- Needs Assessment and System Implementation
- CAD Drawing and Integration
- Field Data Collection including GPS and digital cameras
- Data Integration
- Database Management and Maintenance
- Database Design and Development
- Applications Development
- User Training and Support
- Map Production Analysis
- 3D Modeling and Visualization
- Internet GIS Services
- Application Services Provider (ASP)

SOFTWARE

- ArcInfo
- ArcView
- PenMap
- ArcPad
- World Construction Set
- AutoCad
- AutoCad Map
- MapGuide
- MicroStation
- MapInfo
- EVS ArcIMS

INDUSTRIES SERVED

- Agriculture
- Defense and Intelligence
- Electric and Gas Utilities
- Environmental Management
- Forestry
- Geology/Geotechnical
- Local Government
- Mining
- Pipeline
- Real Estate
- Telecommunications
- Transportation
- Survey and Civil Engineering
- Water and Wastewater

PROJECTS

- Mountain House New Town Site
- Mapping and Data Management for Hydro Relicensing Project
- Millenium Pipeline Project
- GIS Analysis and Data Management for the Largest Open Pit mine in California
- Demographic Analysis for Telecommunications Planning



CONDOR EARTH TECHNOLOGIES, INC.

An Employee Owned Company

Sonora • Stockton • Merced California 800.800.0490

website: www.condorearth.com

e-mail: sonora@condorearth.com